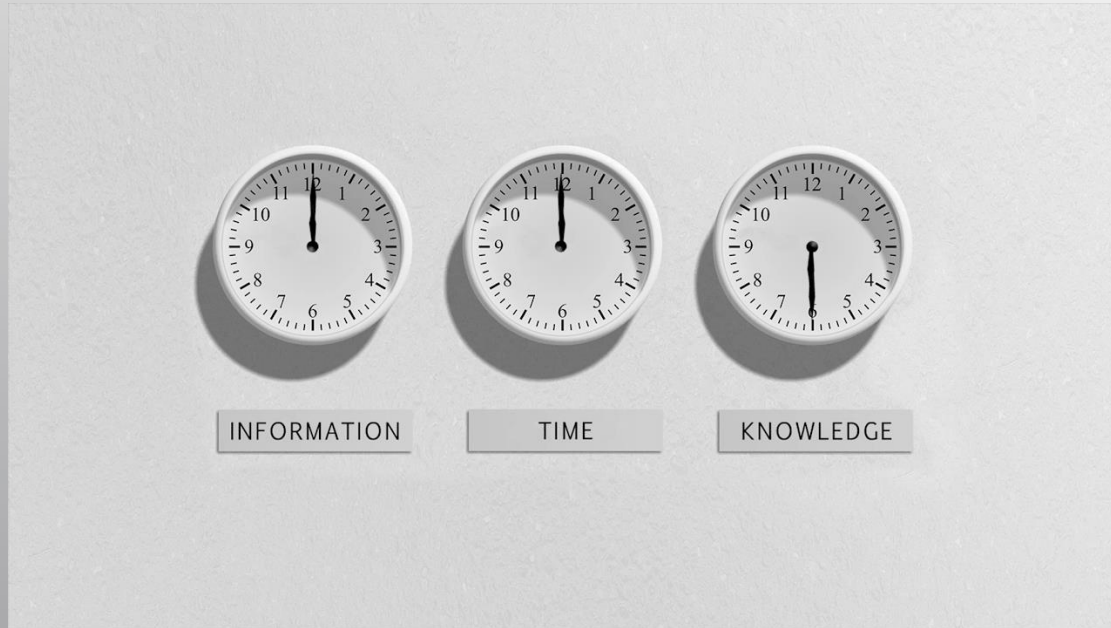


**Miller&Co.**



“Son las decisiones que uno toma y no las condiciones que uno tiene las que condicionan un destino”

## ATC Partner

SINCE 1994 | Authorized Training Center

 **E-LEARNING**  
+ 4.200 ALUMNOS

## AEC

CONSULTING

 + 280 COMPAÑÍAS MIGRADAS DEL CAD AL BIM

## AEC

BMO

 + 1.400.000 M<sup>2</sup> AL AÑO

México y Perú  
**Miller&Co.**  
Juan C. Alfonso

Colombia  
**Miller&Co.**  
David Delgado  
Angela Milanés

Argentina  
**Miller&Co.**  
Buenos Aires



España

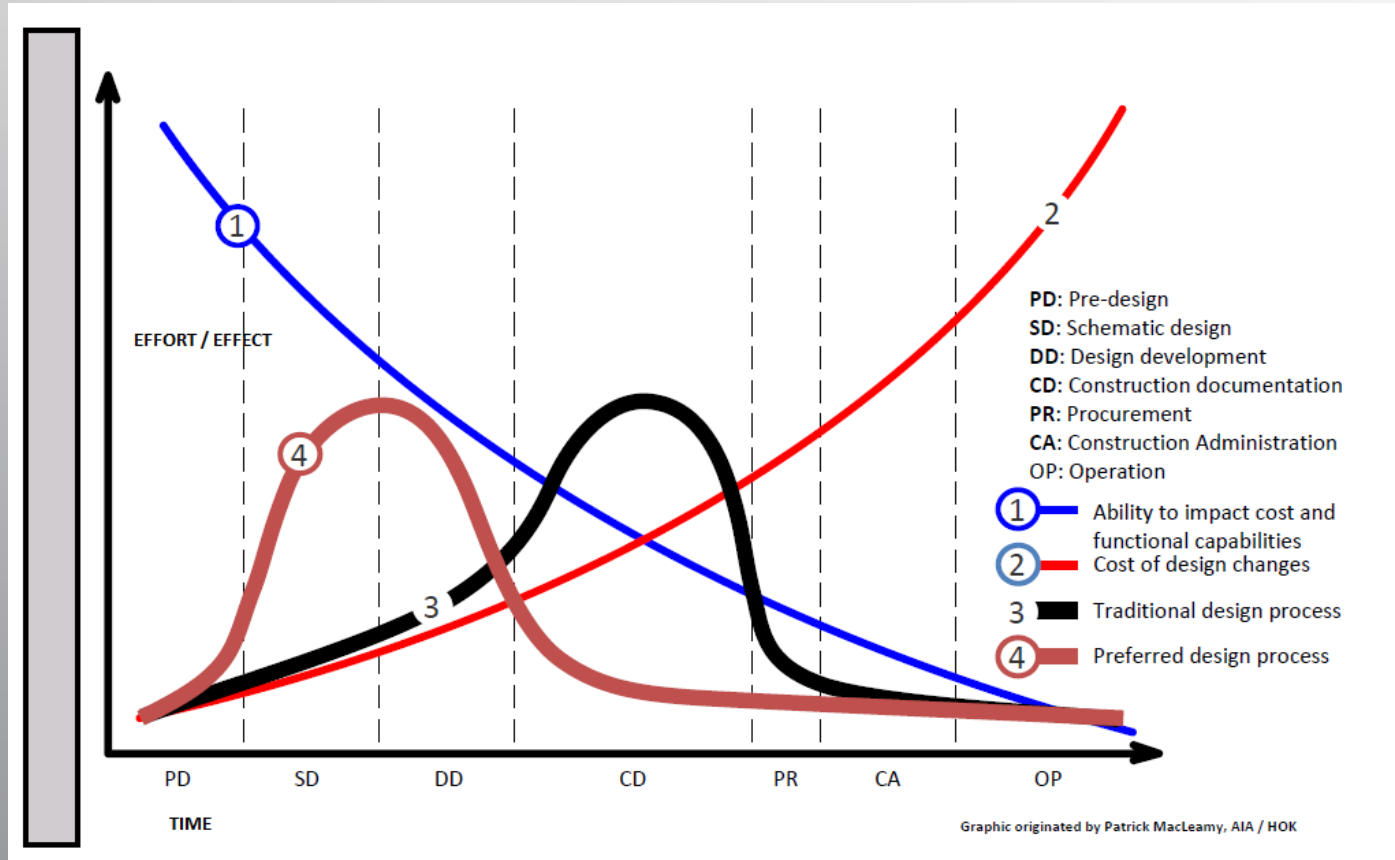
España  
**Miller&Co. Ibérica**  
Javier Calvo Liste

Uruguay  
**Miller&Co.**

1980-2011

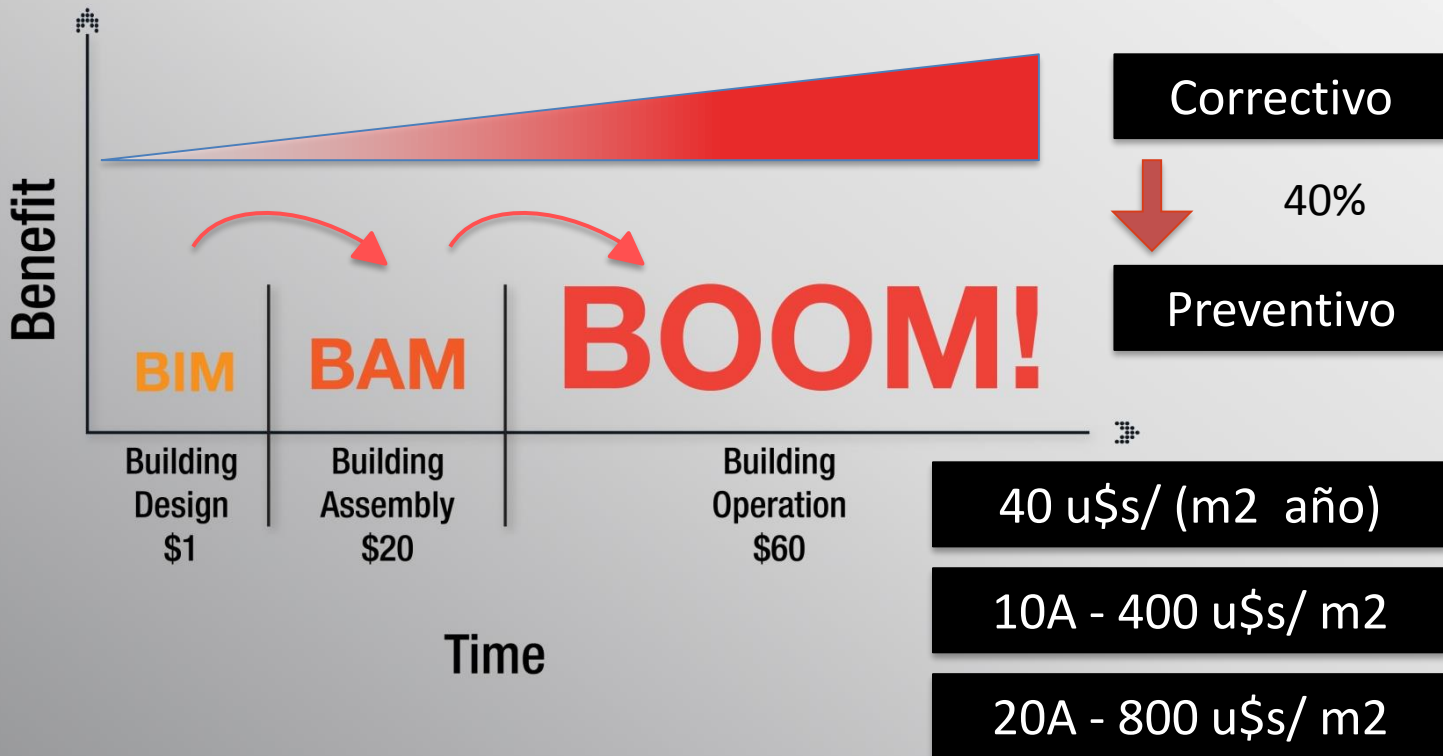
Documentación

Decisiones





# Business Information Management



Edificios

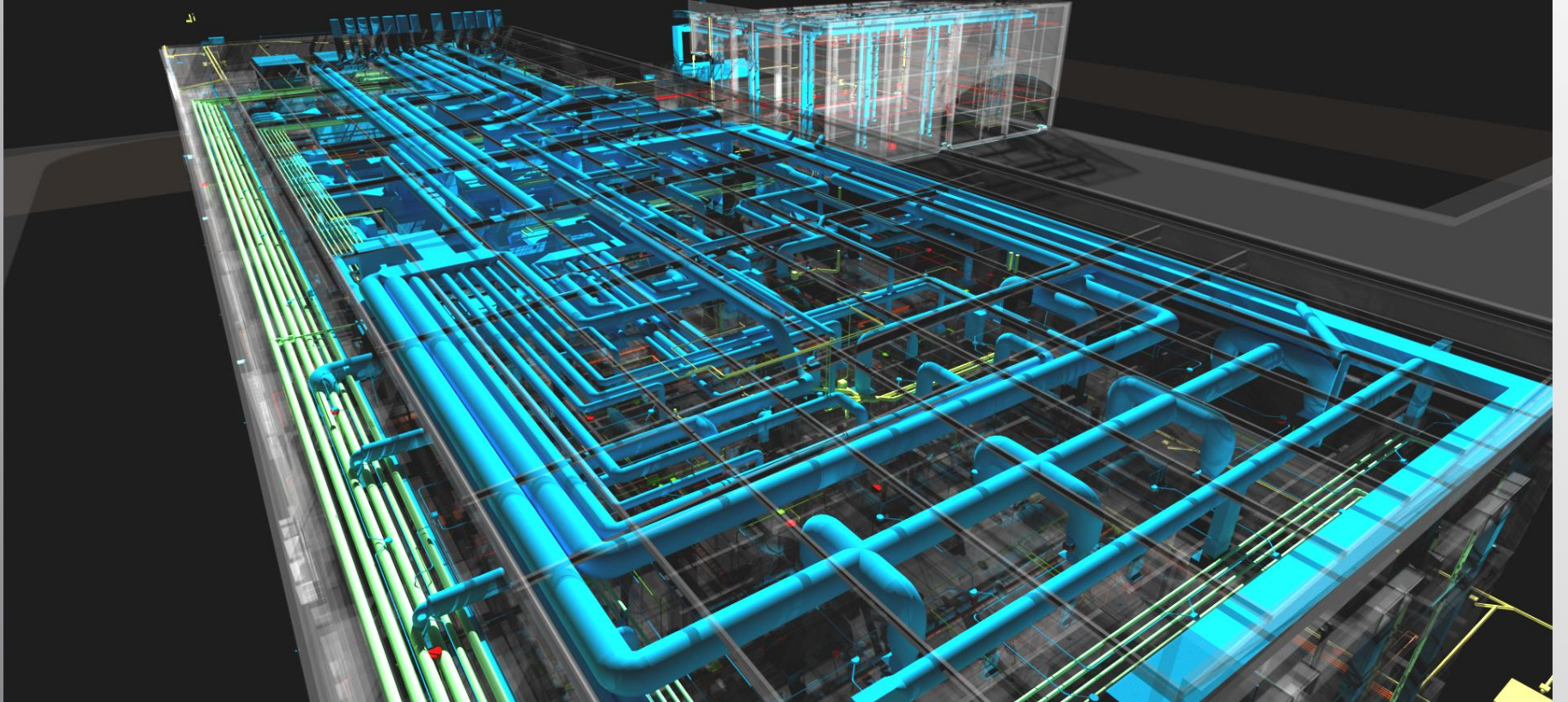
Viales

Infra

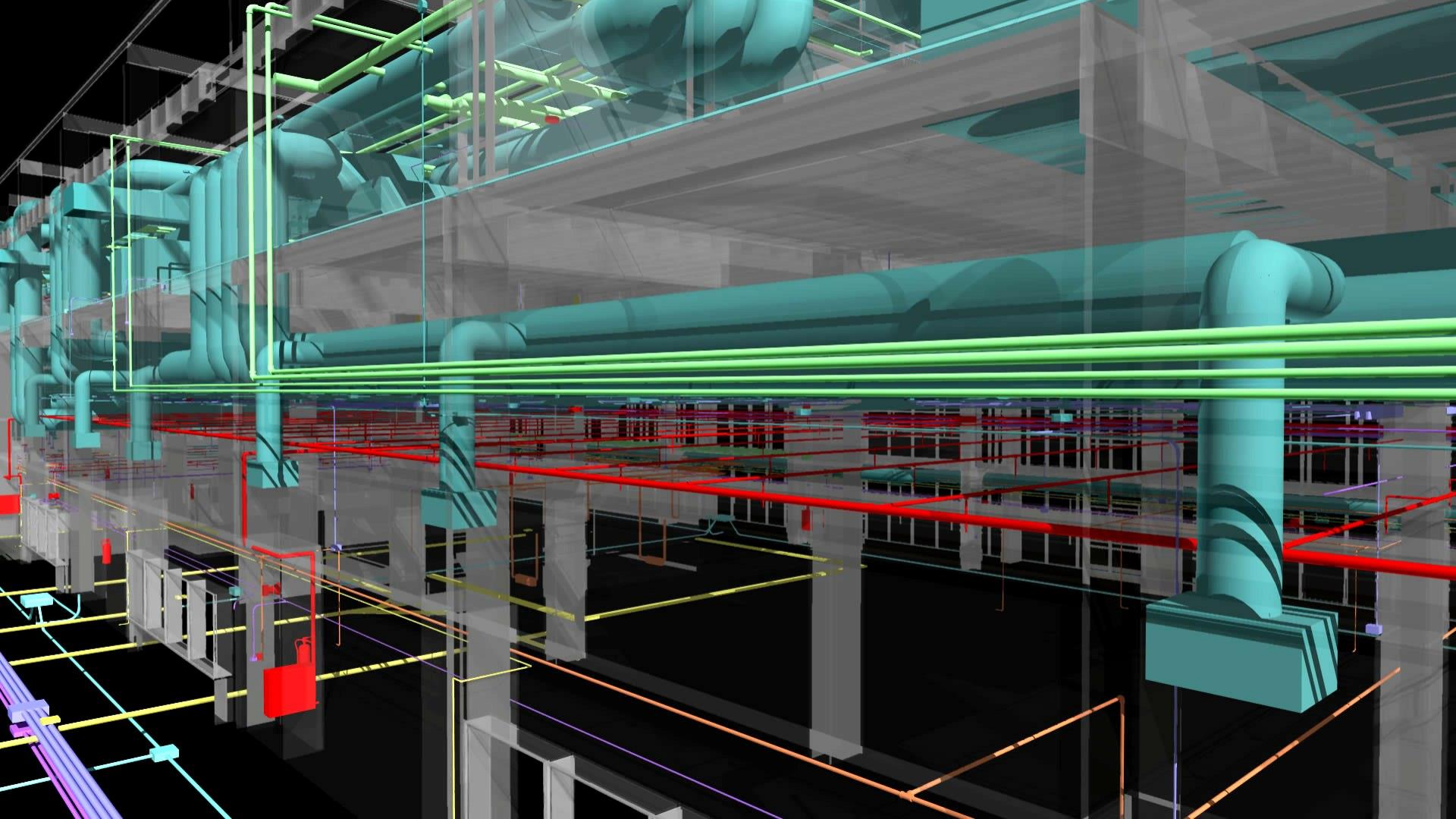
Industria

Ciudades

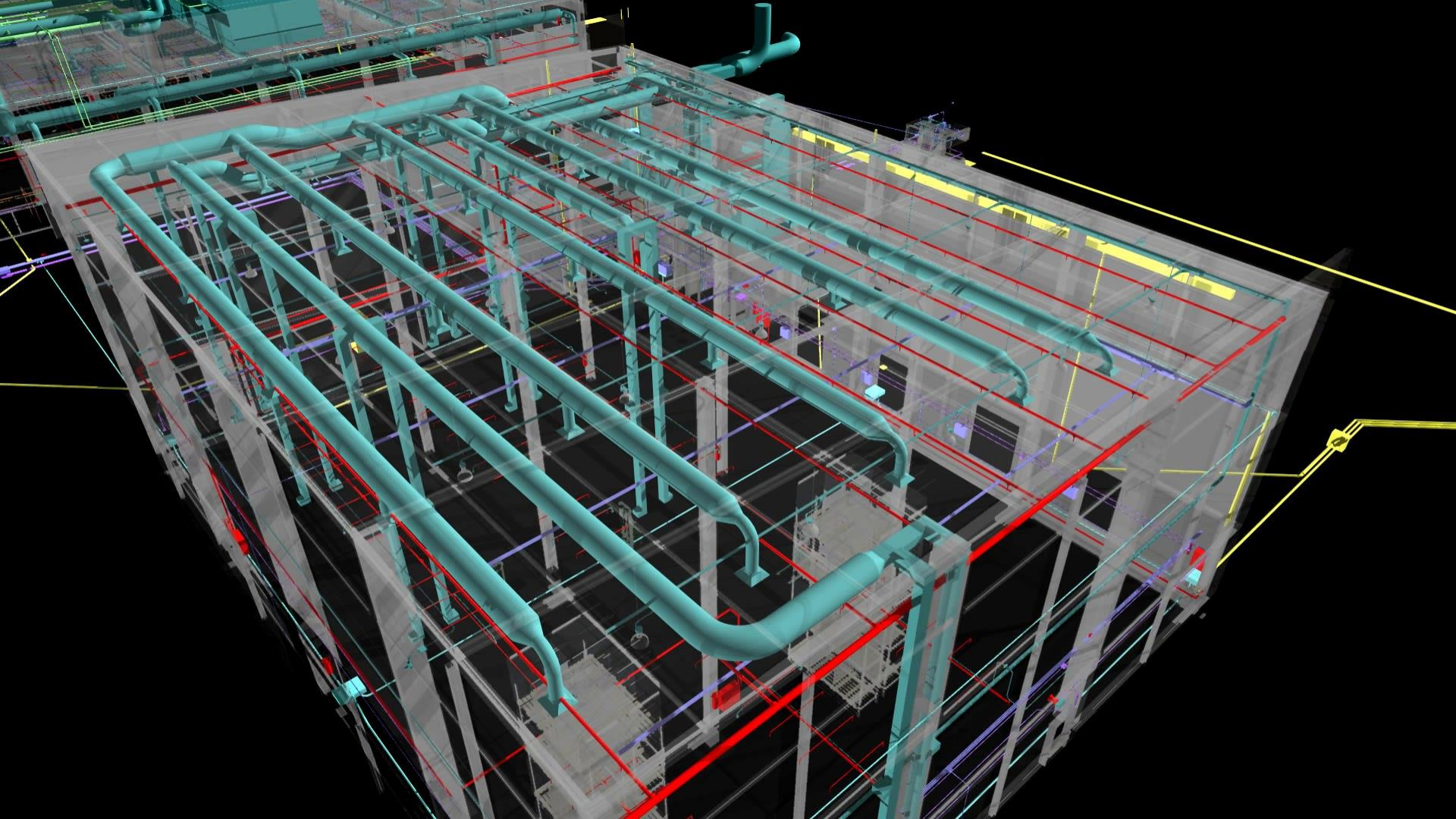


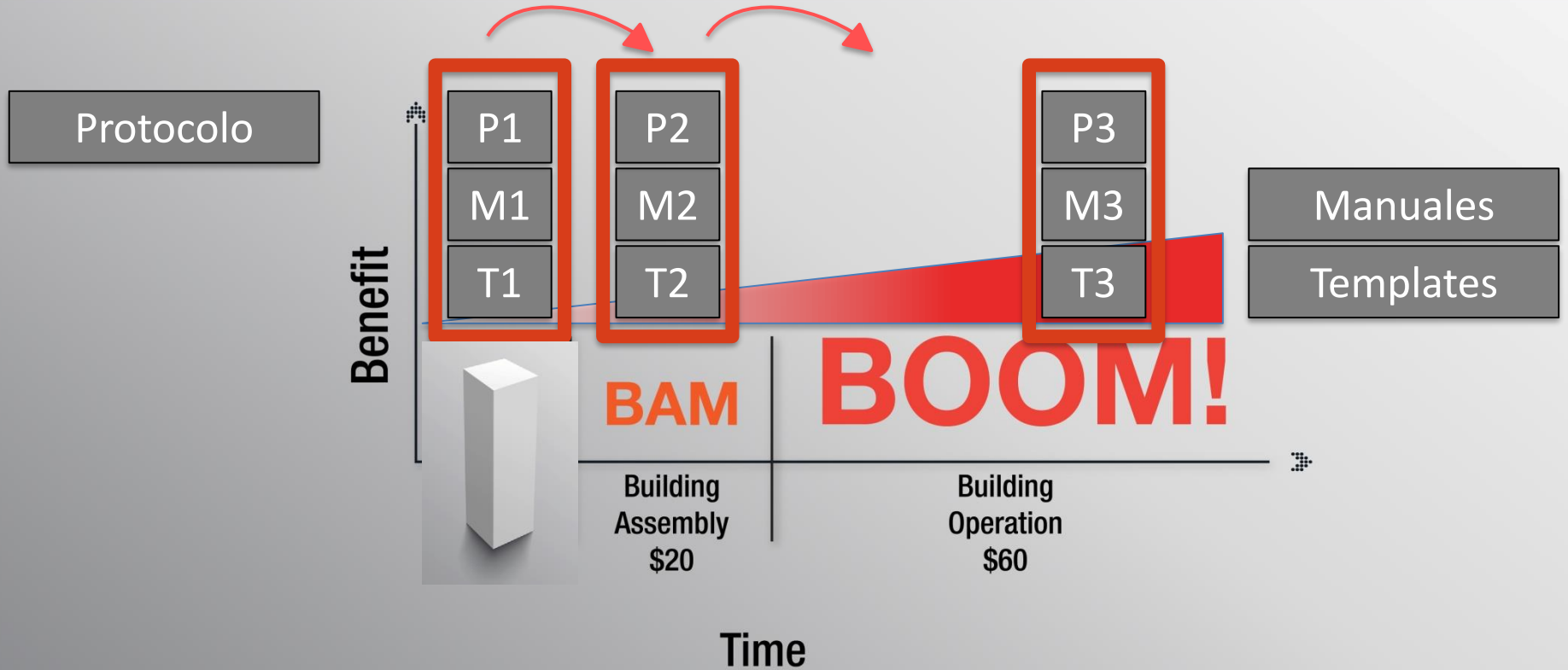












## 3D

- Existing Conditions Models
  - Laser scanning
  - Ground Penetration Radar (GPR) conversions
- Safety & Logistics Models
- Animations, renderings, walkthroughs
- BIM driven prefabrication
- Laser accurate BIM driven field layout

## 4D

### SCHEDULING

- Project Phasing Simulations
- Lean Scheduling
  - Last Planner
  - Just In Time (JIT) Equipment Deliveries
  - Detailed Simulation Installation
- Visual Validation for Payment Approval

## 5D

### ESTIMATING

- Real time conceptual modeling and cost planning (DProfiler)
- Quantity extraction to support detailed cost estimates
- Trade Verifications from Fabrication Models
  - Structural Steel
  - Rebar
  - Mechanical/Plumbing
  - Electrical
- Value Engineering
  - What-if scenarios
  - Visualizations
  - Quantity Extractions
- Prefabrication Solutions
  - Equipment rooms
  - MEP systems
  - Multi-Trade Prefabrication
  - Unique architectural and structural elements

## 6D

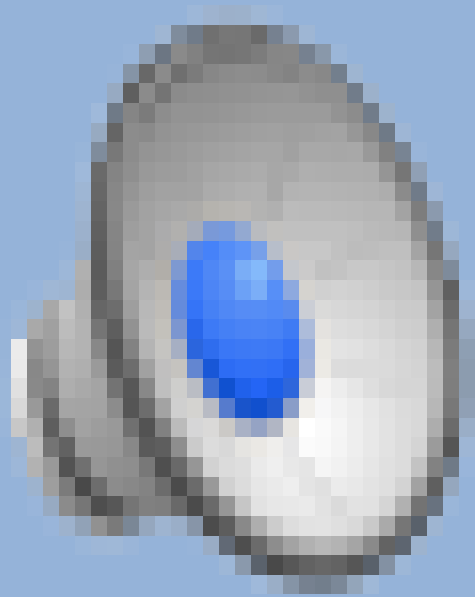
### SUSTAINABILITY

- Conceptual energy analysis via DProfiler
- Detailed energy analysis via EcoTech
- Sustainable element tracking
- LEED tracking

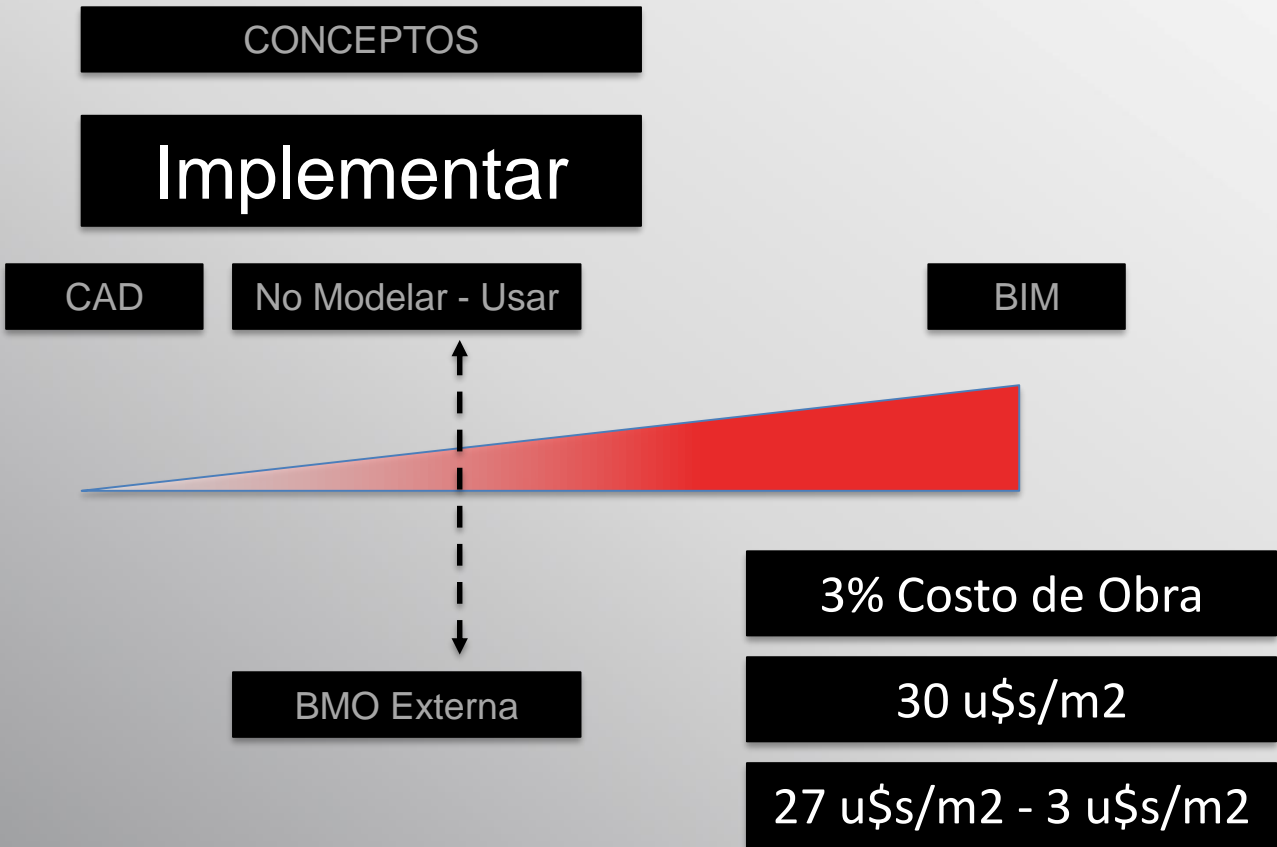
## 7D

### FACILITY MANAGEMENT APPLICATIONS

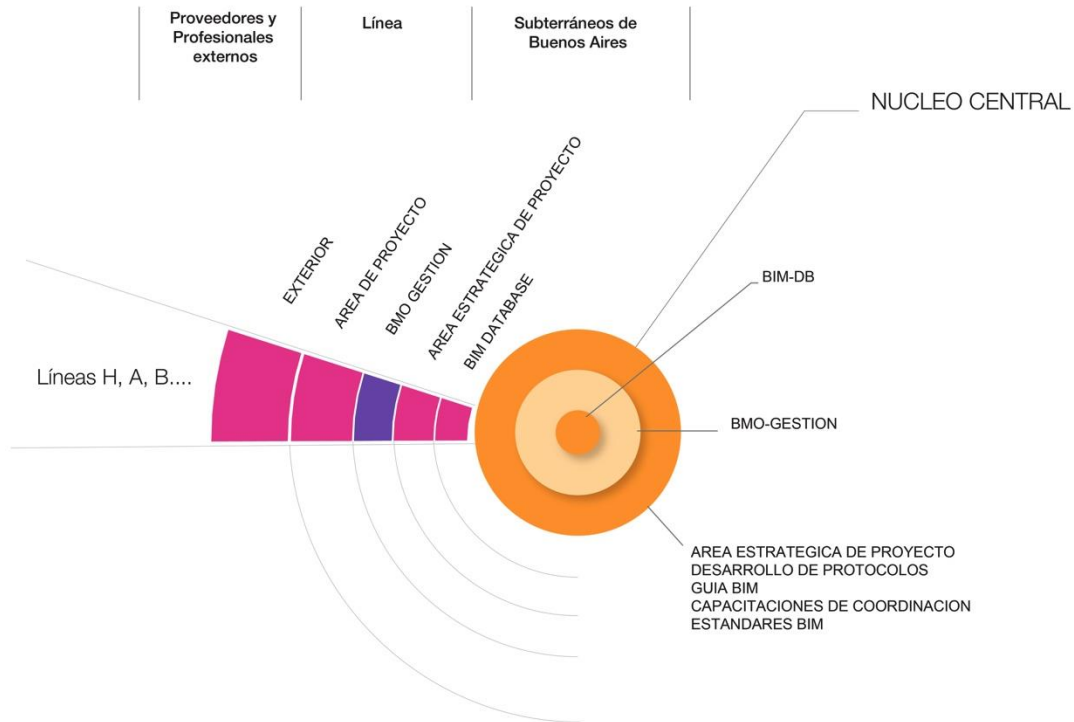
- Life Cycle BIM Strategies
- BIM As-Builts
- BIM embedded O&M manuals
- COBie data population and extraction
- BIM Maintenance Plans and Technical Support
- BIM file hosting on Lend Lease's Digital Exchange System



- Hard - Soft
- MO. De Mercado
- Modelo Protocolo
- Costo Variable
- Mas Barato (CAD)
- Dif. Competencia
- Corto Tiempo





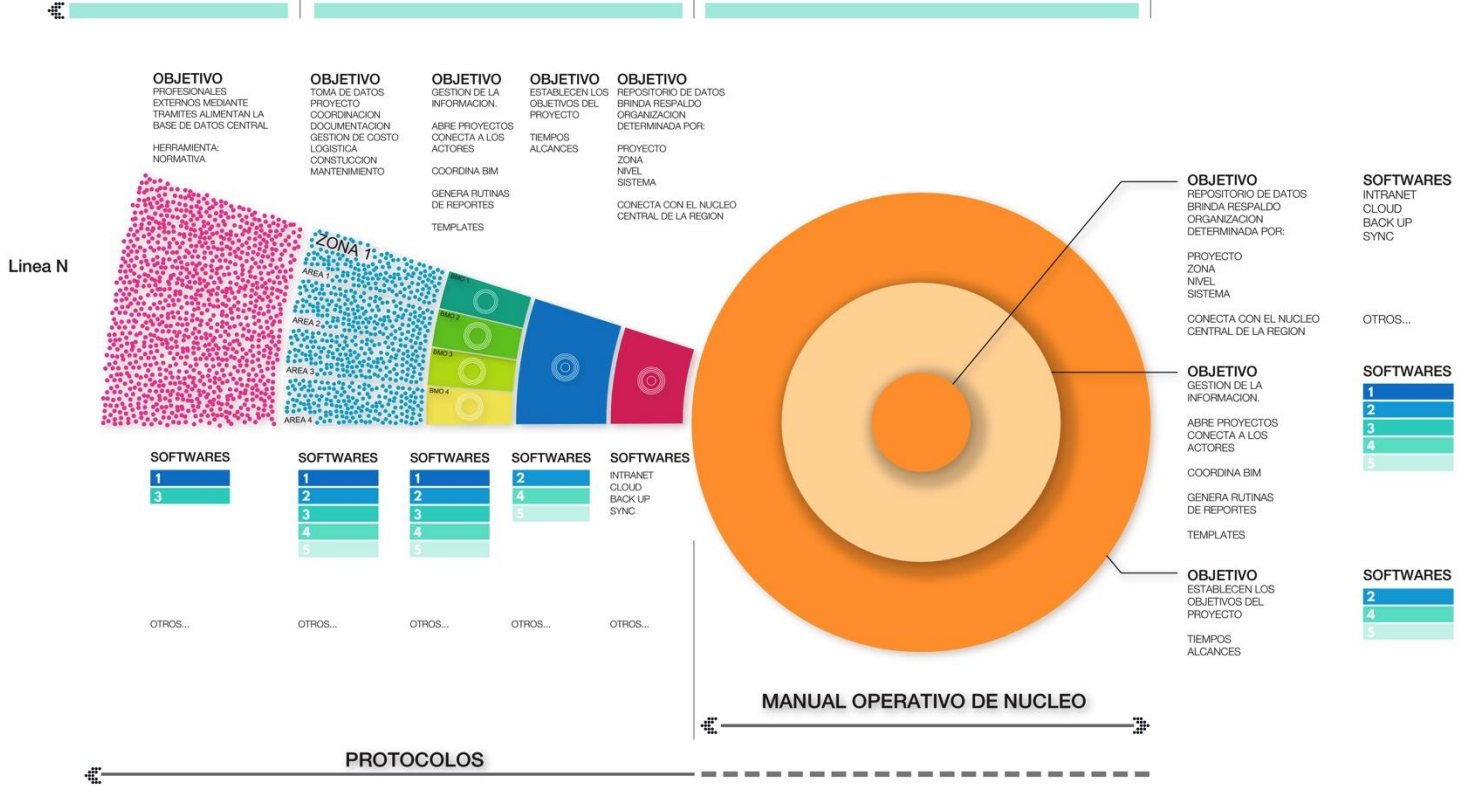




## Proveedores y Profesionales externos

## Línea

## Subterráneos de Buenos Aires





[info@millerco.com.ar](mailto:info@millerco.com.ar)

**Asunto:** Montevideo - BIM

**WhatsApp:** +54 911 6281 1800



ARQ. ANDREA FUKS  
Directora Académica